

Star Party Corner—Keith Mullen, Star Party Coordinator (520)366-0049; repogazer@outb.com

If you missed the New Years Star Party at RGO, you missed a good one. Rich Swanson, Doug Snyder, Gary Myers and Glen Sanner helped the 6 members with learning how to operate their scopes; Thanks Guys. Of 33 who attended 8 were guests and two of them will be our next new members. It was nice to see a yard full of different size scopes for a change. This years Members Star Parties promises to be "more party-less tardy" than in the past, so try to get out to as many as you can.... We Really Want To See You At These HAC Events! And that goes for HAC Officers and Board Members too!

January's Star Party Schedule:

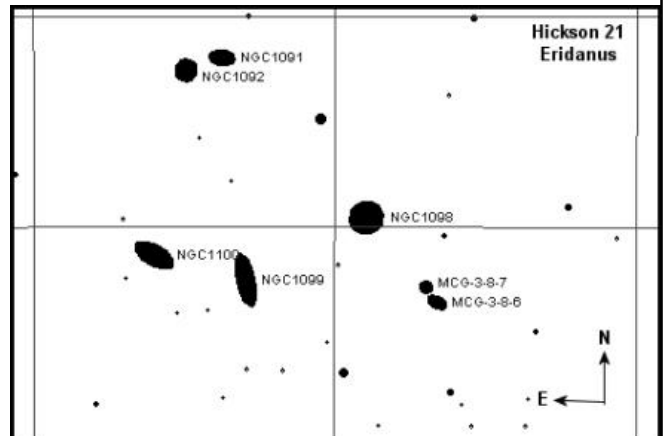
Friday, January 20th: Public Star Party at Dave Healy's JBO; Please attend to assist Dave and have fun; telescopes welcome!

Saturday, January 28th: Members Monthly Star Party will be hosted by Glen and Deanna Sanner at their Discovery Observatory West (DOW); they will provide snacks and refreshments along with Glen's superbly equipped Observatory, this is one you won't want to miss, so grab your scope and get over there..... or just come on over!

Saturday, Jan. 14th: Full Moon Telescope Workshop at Gary Myers Desert Coyote Observatory (DCO) 4:00 pm until finished... What is it? It's a question & answer period and this month Gary will be conducting a Collimation class. Check HAC Web Page for directions. We are hoping to have a number of these Full Moon Telescopes Workshops during the year, so stay tuned!

Travels on the Celestial Sphere by Glen Sanner

John Cassella and myself observed a nice group of galaxies the other night (12-20-05). This collection of galaxies is Hickson compact group 21 in the constellation Eridanus, the River, at RA 02 45.4 and DEC -17.7. Some of the members of this group can be seen with moderately sized scopes in the 10 to 12 inch range. NGC 1099 is the most obvious at magnitude 14.1, then NGC 1100 comes in at mag. 14.0 with NGC 1098 somewhat more difficult at 14.3. These galaxies form a half circle south and southeast of a bright star of 10th mag. NGC 1100 is about 10" East of this star. NGC 1099 is 6" SSE of the bright star and NGC1098 is 4" East of the star.



Opposite this half circle of galaxies is a close galaxy pair. These two galaxies are NGC 1092 at 15.5 mag and just SW of this galaxy is NGC 1091 at 15.3 mag. All of these galaxies form somewhat of a complete circle with a diameter of perhaps 10" to 11". A very nice group of galaxies easily seen this time of year and a large light bucket is not needed.

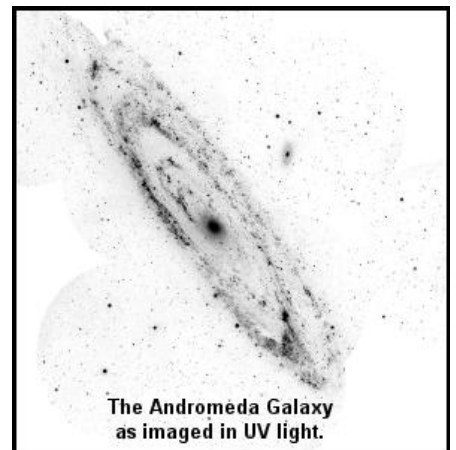
Huachuca Astronomy Club

P.O. Box 922
Sierra Vista, AZ 85636
<http://c3po.cochise.edu/astro>
hac@palominas.com
Yearly Membership: Individual: \$25; Family: \$35; Military: \$20; student:\$10 (with conditions)
President: Doug Snyder (520) 366-5788
(starhaven@palominas.com)
Vice President: Wayne Johnson
Treasurer: Tim Doyle
Secretary: Jeanne Herbert
Star Party Coordinator: Keith Mullen 366-0049
Public Events Coordinator: Jeanne Herbert
(jeanne_hrbrt@yahoo.com)

JOIN & USE OUR HAC-LIST GROUP!!!!!!!

ANDROMEDA VIEW (Con't)

GALEX has photographed an even greater number of distant galaxies—"some as far away as 10 billion light-years," Boissier adds—to measure how the rate of new star formation has changed over the universe's long history. Contained in those terabytes of data is our universe's "life story." Unraveling it will keep scientists busy for years to come. The GALEX Telescope: f/6.0 Richey-Chretien design, 19.7 inches diameter primary mirror, 8.8 inches diameter secondary mirror.



The Andromeda Galaxy as imaged in UV light.